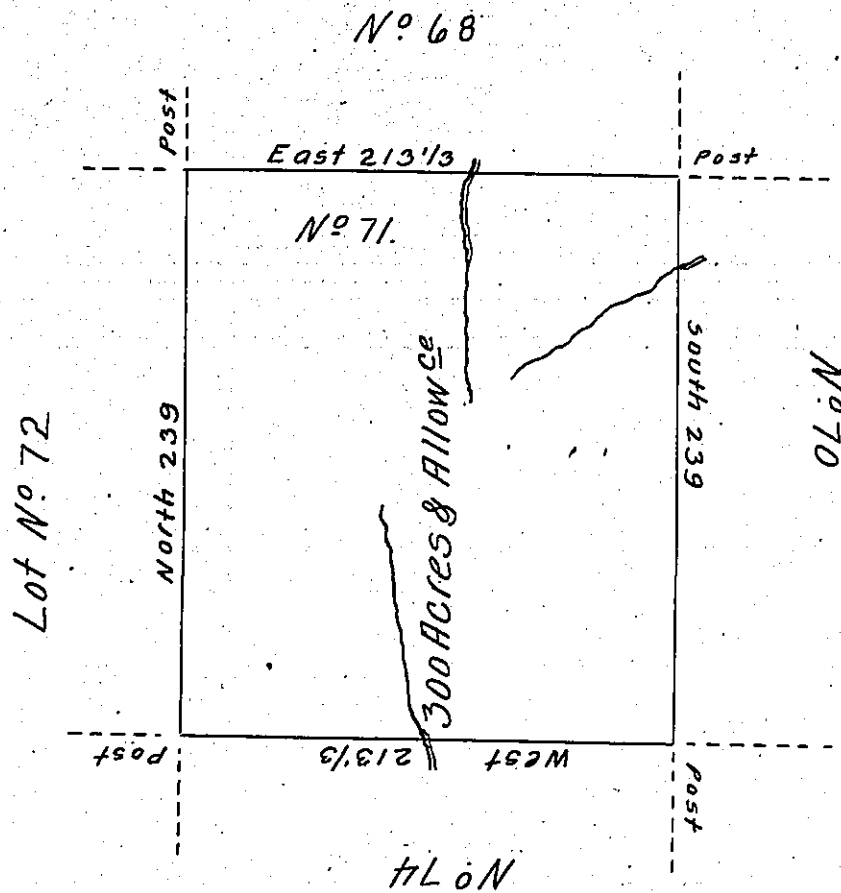


✓



Situate on the Waters of Brush Creek Between the Seventeenth & Eighteenth Parallel in that Part of District No 3 to me Allotted on the North side of the River Ohio being Part of the Land Appropriated for the Redemption of the Certificates of depreciation &c<sup>a</sup> Surveyed in June 1785. Pursuant to Instructions from Jn<sup>o</sup> Lukens Esq<sup>r</sup> Surveyor Gen<sup>l</sup> dated at Philadelphia 5<sup>th</sup> March 1785.

Nat<sup>l</sup> Breeding D.S.

IN TESTIMONY that the above is a copy of the original remaining on file in the Department of Internal Affairs of Pennsylvania, made conformably to an Act of Assembly approved the 16th day of February, 1833, I have hereunto set my Hand and caused the Seal of said Department to be affixed at Harrisburg, this thirteenth day of November 1906.

*Isaac D. Brown*  
Secretary of Internal Affairs.